

AquaRoute® Temp

Description of product **AquaRoute® Temp** is an acrylic water based paint for temporary road markings or track markings. Suitable for pneumatic and airless spray application, as well as manual application by roll, draw-box, etc.

Area of application It was properly developed for events like city runs, marathons and exhibitions – wherever a short-term marking is needed! **AquaRoute® Temp** is worn down fast by wear from traffic and weathering. The lifetime of the markings are within 1 - 4 weeks depending on the thickness of the line, place of application and general wear and tear from traffic and weather. Also, **AquaRoute® Temp** can be removed by high pressure water jet blasting.

AquaRoute® Temp consists of 2 parts: base and colour paste. The base (25.2 kg / 14 LTR) is available in two different versions:

AquaRoute® Temp Base white

AquaRoute® Temp Base unpigmented

The combination of colour pastes with the white version leads to pastel tones (no confusion with RAL-tones), whereas with the unpigmented version powerful colour tones are obtained.

AquaRoute® Temp Paste (0.75 kg / 0.73 LTR) is available in different colours:

AquaRoute® Temp Paste Blue

AquaRoute® Temp Paste Red

AquaRoute® Temp Paste Yellow

AquaRoute® Temp Paste Green

AquaRoute® Temp Paste Orange

AquaRoute® Temp Paste Black

More colour tones available on request. **AquaRoute® Temp Pastes** are miscible with each other, individual colours can be created. Usually 1 can of **AquaRoute® Temp Paste** should be mixed homogeneously with 1 bucket **AquaRoute® Temp Base**.

Technical characteristics

Chemical composition Waterborne 1-component acrylic paint; aqueous organic pigment-paste, stabilised.

	Base	Paste
Colour	Unpigmented	different colour tones available
Density	1.80 ± 0.04 kg/l (basic)	1.03 ± 0.04 kg/l (paste)
Solid Content	72.5 % ± 2.0%	8.0 % ± 1.0 %
Viscosity	20 – 45 s	6 – 12 s

(Cup Ø 6 mm, EN 2431)

VOC-content None (according to VOC-guideline 2004/42/EG)

Additional information See MSDS.

Application note

Start-up / mixing ratio Before starting works the paint (basic) has to be mixed with the paste thoroughly.
 By weight: 100 : 3 equivalent to 25 Kg paint + 0.75 Kg pigment paste
 By volume: 18.5 : 1 equivalent to 14 LTR paint + 0.73 LTR pigment paste

Surface preparation For bitumen surfaces. The surface has to be dry, clean and adhesive. It has to be free of dust, oil or other contamination.

Application conditions Air temperature: > 12 °C
 Pavement temperature: 15 °C – 45 °C
 Air humidity: up to 75 % H rel.

Airless equipment Recommend nozzle type: 0.019 – 0.023 inches Angle ≤ 40
 Recommend filter 60 mesh

Note: Dry paint chips are not soluble in water!

Wet film thickness **Maximal 250 µm**
Higher wet film thickness will increase the drying time significantly!

Consumption
 (all tones)

Approximate: 0.45 Kg/m² 0.25 LTR/m²

Consumption for a line (wet film thickness 250 µm) with a length of 1000 meter

Width	Quantity
8 cm	20.0 LTR = 36.0 Kg
10 cm	25.0 LTR = 45.0 Kg
12 cm	30.0 LTR = 54.0 Kg
15 cm	37.5 LTR = 67.5 Kg

Drying Time

250 µm: 30 min.

Rain resistance

250 µm: 40 min. after drying time

(without mechanical load)

Storage

6 months after delivery, when kept in the original packaging under proper storage conditions. Please notice that the material can show a tendency towards sedimentation during transport and storage. After having been stirred-up homogeneously, the material will be ready for use again. Skins of paint have to be removed completely. Never try to stir them up. Store in tightly closed original containers in a dry, well-ventilated room at temperatures between +5 °C and +30 °C (41 °F – 86 °F), not directly on the floor and not in the vicinity of heating radiators.

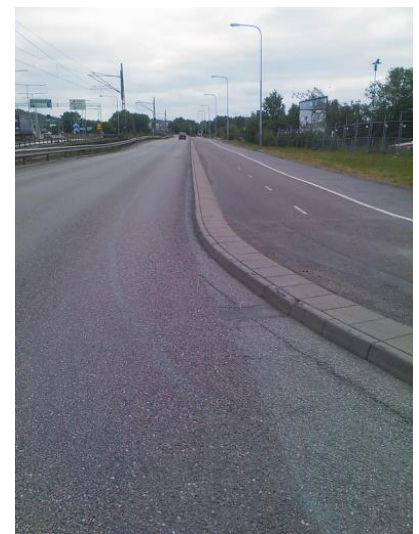
Packaging

Paint: Plastic bucket with 14.0 LTR = 25.2 Kg net.

Paste: Plastic can (screw cap) with 0.73 LTR = 0.75 Kg

Removal

High pressure water jet cleaner or pass over less 50.000 (depending on conditions). Marking should be wetted at least 1 min. for easy removal.



Pictures of a low traffic road in Goteborg/Sweden; Marathon 2010. From left to right: after 3, 6 and 30 days.
 Colour tone: 1 can **AquaRoute® Temp-Paste Blue** in 1 bucket
AquaRoute® Temp-BASE with white pigment.

GEVEKO MATERIALS • PLASTIRROUTE

Spezialfarben für Horizontal-Markierungen GmbH
 Renkenrungsstraße 16
 79379 Müllheim/Baden • Germany
 Phone: +49 7631 3687-0
 Fax: +49 7631 368736

Info@plastroute.de
www.plastroute.de

This information was compiled to the best of our knowledge, based on lab tests and practical experience. Since the product is processed under conditions that are beyond our control, we can only guarantee the quality of the product. The information provided here is not to be deemed a warranty as to quality. We reserve the right to modify the information within the scope of existing approvals.